

Flexi-Lift® Elevator Specifications for Limited Use/Limited Application Compliance

PART 1 GENERAL

1.01 SUMMARY

A. The product described herein, manufactured by Access Industries, is an elevator designed and dimensioned to provide Limited Use/Limited Application (LULA) lift capacity to suit individual building requirements for use by persons with disabilities.

1.02 REFERENCES

A. Elevator shall be designed, manufactured and installed in accordance with the following standards:

1. American National Standards Institute (ANSI).
2. American Society of Mechanical Engineers (ASME).
3. National Electrical Code (NEC).
4. American Society for Testing Materials (ASTM).
5. American Welding Society (AWS).

1.03 SYSTEM DESCRIPTION

A. 3.5 hp submersed motor and pump with two-speed valve assembly; Programmable logic controller with collective operation; 1:2 roped hydraulic single stage cylinder with line rupture valve.

B. Number of Stops: (specify:) Two to five.

C. Car Configuration: (specify:) straight-thru, 90° side exit or enter/exit same side.

D. Maximum Travel: (specify:) Up to 25'

E. Rated Load: (specify:) 1400 lbs.

F. Rated Speed: 25 fpm.

G. Car Size:

1. 42" x 60" platform
2. 80" high ceiling

H. Car Walls: (specify:) Metal panels (taupe, sable brown, pearl gray or ivory powder-coated finish), laminate panels (light oak, dark oak, champagne or white), wood veneer panels or raised wood panels.

I. Car Ceiling: White panel

J. Car Lighting: Two recessed lights.

K. Operating Features:

1. Car Operating Panel: (specify:) Brushed stainless steel or brushed bronze panel with illuminated automatic controls, keyed light switch, emergency stop switch and alarm button.
2. Hall Stations: (specify:) Brushed stainless steel or brushed bronze panel with illuminated button and (specify option:) key lock provided at each landing.
3. Car Door(s): Fully automatic, side opening, sliding car door with electromechanical interlocks, obstruction sensor, and automatic re-open system.
4. Hoistway Doors: 1-1/2 hour fire rated fully automatic side opening, sliding hoistway doors with two side opening panels in steel frame with electromechanical interlocks.
5. Handrail: (specify:) Stainless steel or bronze.
6. Pit Switch and car top run/stop switch.
7. Car top inspection station with UP and DOWN test switches, emergency stop, light outlet and battery backup emergency light and alarm with illuminated alarm switch in car.
8. Automatic homing to the lowest floor – with adjustable timing.
9. Slack rope safety.
10. Anti-creep device.
11. Overspeed governor.
12. Dual direction leveling.
13. Upper and lower terminal limit.
14. Pump run timer.
15. Pit clearance device.
16. Automatic battery powered and manual emergency lowering control devices.
17. Minimum pressure switch.
18. Maintenance stop blocks (set of two)
19. (specify option:) Phase 1 fire service.
20. (specify option:) Hall lanterns with chime.
21. (specify option:) Recessed telephone cabinet (brushed stainless steel or brushed bronze).
22. (specify option:) Buffer springs and stands (requires 24" pit).
23. (specify option:) Tank heater.

1.04 QUALITY ASSURANCE

A. Manufacturer: Provide elevator manufactured by a firm with a minimum of 10 years experience in fabrication of elevators equivalent to those specified.

B. All designs, clearances, construction, workmanship and material, unless specifically accepted, shall be in accordance with all codes having legal jurisdiction.

C. All load ratings and safety factors shall meet or exceed those specified by all governing agencies with jurisdiction and shall be certified by a professional engineer.

D. Elevator shall be subject to applicable state, local and city approval prior to installation and subject to inspection after installation. Determination of and adherence to these regulations is the responsibility of the elevator contractor.

E. Welders certified in accordance with requirements of AWS D1.1 shall perform all welding of all parts.

F. Substitutions: No substitutions permitted.

1.05 WARRANTY

A. Warranty: Manufacturer shall warrant component parts of the Flexi-Lift® elevator for a period of 1 year after installation.

1.06 MAINTENANCE

A. The Flexi-Lift® elevator must be maintained in accordance with manufacturer's instructions.

PART 2 PRODUCT

2.01 MANUFACTURER

A. Provide the Flexi-Lift® home elevator manufactured by Access Industries.

1. Contact: 4001 E. 138th Street, Grandview, MO 64030
Telephone: 800-925-3100; Fax: 816-763-4467
Email: archassist@accessind.com
Web site: <http://www.accessind.com>

2.02 MATERIAL

A. Guide Rail: Dual 8 lbs. machined steel T-rail system.

B. Wire Rope: Four 3/8" diameter 8 x 19 ga. special traction steel cables with forged rope sockets.

C. Sling: Structural and formed steel plates with guide rollers.

D. Platform Floor: Unfinished plywood flooring.

2.03 FINISHES

A. Components shall be prepared with 1) alkaline detergent wash, 2) clear water rinse, 3) iron phosphate coating, 4) clear water rinse and finished with electrostatically applied and baked thermosatic powder-coat finish for indoor or outdoor use. Standard color is ivory.

2.04 ELECTRICAL SYSTEMS

A. The electrical contractors shall provide:

1. 230 VAC, 50 amp, 60 Hz, single phase power source in the machine area with manually operated fused line disconnect.
2. 115 VAC, single phase, 15 amp, 60 Hz, single phase power source with manually operated fused line disconnect for car lighting and a light outlet inside the hoistway.
3. Telephone circuit in the machine area.

PART 3 EXECUTION

3.01 ACCEPTABLE INSTALLERS

A. Installers shall be experienced in performing work of this section who have specialized in work comparable to that required for this project.

B. Installers shall be certified and trained by the manufacturer.

3.02 EXAMINATION

A. Use field dimensions and approved manufacturer's shop drawings to examine substrates, supports and other conditions under which this work is to be performed. Do not proceed with work until unsatisfactory conditions are corrected.

3.03 INSTALLATION

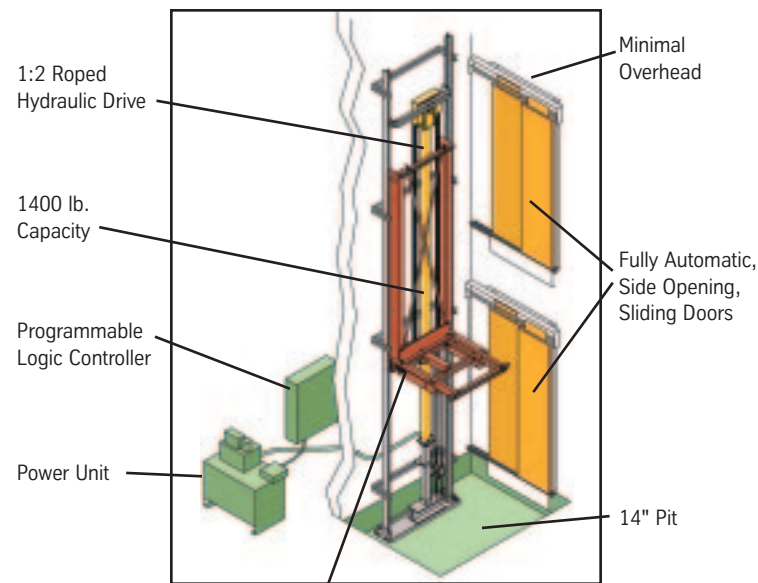
A. The Flexi-Lift® elevator shall be installed in accordance with manufacturer's instructions and as specified and approved by architect.

3.04 DEMONSTRATION

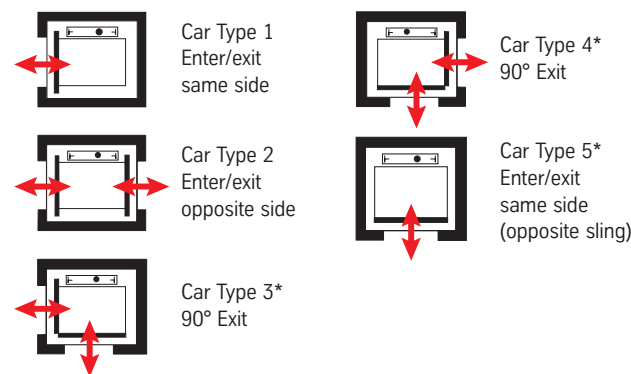
A. The elevator contractor shall make a final check of the elevator's operation with the Owner or Owner's representative present prior to turning the elevator over for use. The elevator contractor shall determine that operating and safety devices are functioning properly.

END OF SECTION

Notes: Intent of specification is to broadly outline equipment required but does not cover details of design and construction.



Flexible car sizes and configurations to complete your elevator



*Car types 3, 4, and 5 are not ADA/ADAAG compliant

General Specifications:

- Flexi-Lift LU/LA meets requirements of ASME A17.1-2000 Part 5.2 (LU/LA)
- Flexi-Lift Build-to-Order (BTO) start with a base elevator; add options as needed. (Not LU/LA compliant)
- Rated load: 1400 lbs.
- Standard car size: 42" x 60"
- Custom sizes available in 42" to 54" wide by 36" to 60" deep (18 ft² max.)
- Maximum travel: 25 feet LU/LA or 35 feet on BTO model
- Fully automatic operation
- 1:2 roped hydraulic drive
- Controlled by Programmable Logic Controller (PLC)
- Warranty: 1 year parts

Flexibility in Meeting Codes and Standards

The Flexi-Lift LU/LA elevator offers features and benefits to meet ASME and ADAAG standards and local code requirements. The Flexi-Lift is also ideal for installations in private residences and buildings that don't require all of the features built into a LU/LA elevator. But, to ensure your installation meets the appropriate local elevator/accessibility codes, you should contact your authorized dealer and local elevator code authority for specific requirements in your area.

Expert Evaluation

Your local authorized Access Industries dealer is the best source to help you determine the accessibility solution for your building. Call today for the Flexi-Lift elevator dealer in your area. He will be happy to give you all the information you need to choose the correct elevator for your needs.

Architects

- Ask us for a Flexi-Lift elevator planning guide for specifications and detailed product information.
- See our complete specifications and detailed drawings on CD-Rom from Sweet's or online at www.sweets.com and www.accessind.com
- For detailed information about Access Industries' complete line of elevator and accessibility products, ask us for a complete Architect's Specification Book.

Specifications and/or colors subject to change without notice.

Visit our web site at www.accessind.com for more information including complete specifications, CAD details, and typical drawings.

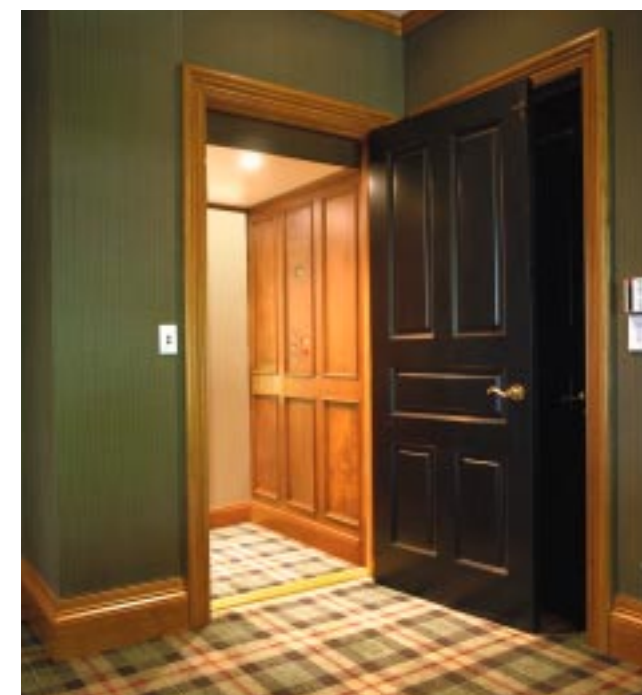
Manufactured in USA since 1947.



ThyssenKrupp Access Corporation
4001 East 138th Street
Grandview, MO 64030

800.829.9760
www.accessind.com

Flexi-Lift® Limited Use/Limited Application Elevator



A ThyssenKrupp
Elevator company

Access Industries



ThyssenKrupp

The Preferred Choice Flexi-Lift® LU/LA Elevator



The fully automatic side opening doors leave a 36" clear opening for easy accessibility. Interior metal wall panels with durable powder-coat finish in choices of ivory, taupe, sable brown, or pearl gray. Add electronic eye obstruction sensors at the car entrance for additional level of safety.

Access makes good business sense. That's why we designed the Flexi-Lift elevator to be practical and flexible, making it the preferred choice of professionals who demand value and never compromise quality. Whether you're looking for a fully ADA compliant LU/LA elevator or want one built-to-order (BTO), the Flexi-Lift is the ultimate design solution for your facility.

How the Flexi-Lift transcends traditional elevators:

- Maximize valuable space with the smaller hoistway and custom fit the car to your new or existing building's space requirements
- Hydraulic drive offers a superior smooth, quiet ride
- 14" pit requires no major excavation
- Reduced overhead clearance — just 10'-7" — fits within most existing facilities
- Remote power unit and controller give you more flexibility
- Save time and money! Manufacturing efficiencies mean the elevator will be ready to install sooner than typical elevators. Modular design increases installation efficiencies.



(top) Manual Swing Hoistway Door with Automatic B-fold Car Door

(left) Accordion Car Gate (chalk shown; available in chalk, light oak, oak, walnut or white)



Doors for easy accessibility

The Flexi-Lift comes standard with fully automatic side opening doors.

An optional choice is a manual swing hoistway door with automatic bi-fold car door or manual accordion car gates.

Flexible Interior Finishes Designed to Last



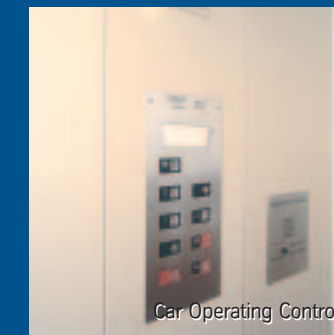
Standard powder-coated metal wall panels.



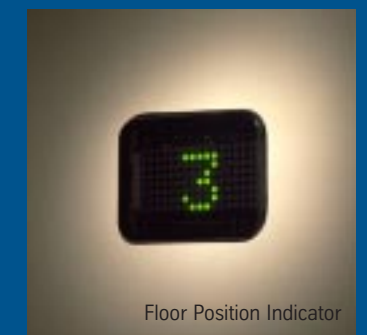
Optional Interiors



Handrail



Car Operating Controls



Floor Position Indicator



Lighting



ADA Telephone



Recessed Telephone Box

Walls

Car walls come standard in your choice of four metal finishes: ivory, taupe, sable brown or pearl gray. You can also select optional laminate panels in champagne, dark oak, light oak, or white (not shown).

Handrails

Handrails can be selected in stainless steel or bronze.

Lighting

Dual recessed ceiling lights illuminate the car for complete visibility. Add motion detectors to the car light to conserve energy.

Car operating controls

Controls illuminate when the desired floor button is pressed. Add key locks in car operating panel or hall stations to prevent unauthorized use. Battery-operated emergency light and alarm are standard features.

Digital floor position indicator displays the location of the car, an optional feature on the built-to-order "BTO" model.

Communication

Each car is equipped with a telephone jack and you can add an ADA compliant telephone.

Optional recessed telephone box is available in stainless steel or bronze.